



1 2 3 NORTH  
WACKER  
AMENITIES



## NEW Fitness Center and Bike Room

Cardio, free weights, Fitness on Demand and classes available!  
**\$75 annual fee**

**Additional Fitness Center offerings:**  
> Daily laundry service available  
**\$25 per month**

**Bike storage \$50 annual fee**

**Additional offerings:**

- > Bike lockers available  
**\$10 per month**
- > Accessory Locker  
**\$25 annual fee**
- > Want to shower? Join both the Fitness Center and Bike Room for  
**\$110 annual fee**





Copyright JLL and Wright Heerema Architects

## NEW Conference Center



### Capacity

- Small Room: 12 Boardroom
- Large Room: 72 Theater, 48 Classroom, 48 pods, 26 U-Shaped, 56 Banquet
- Tenant Lounge: Max Occupancy 200

### Hours

#### Conference Space

Half Day:

8:00 am-12:00 pm  
1:00 pm-5:00 pm

Full Day:

8:00 am-5:00 pm

#### Lounge Space

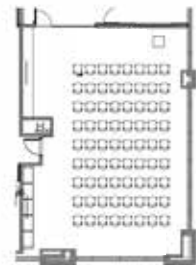
After Hours:

5:00 pm-10:00 pm

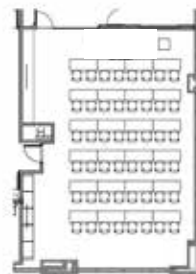
### Rates

	½ Day	Full Day
Small Room	\$150	\$300
Large Room	\$500	\$1,000
Both Conference Rooms	\$550	\$1,100
Tenant Lounge (after hours)		\$2,000

\*Includes Security & Cleaning. Does NOT include HVAC - \$100/hour after 6 pm



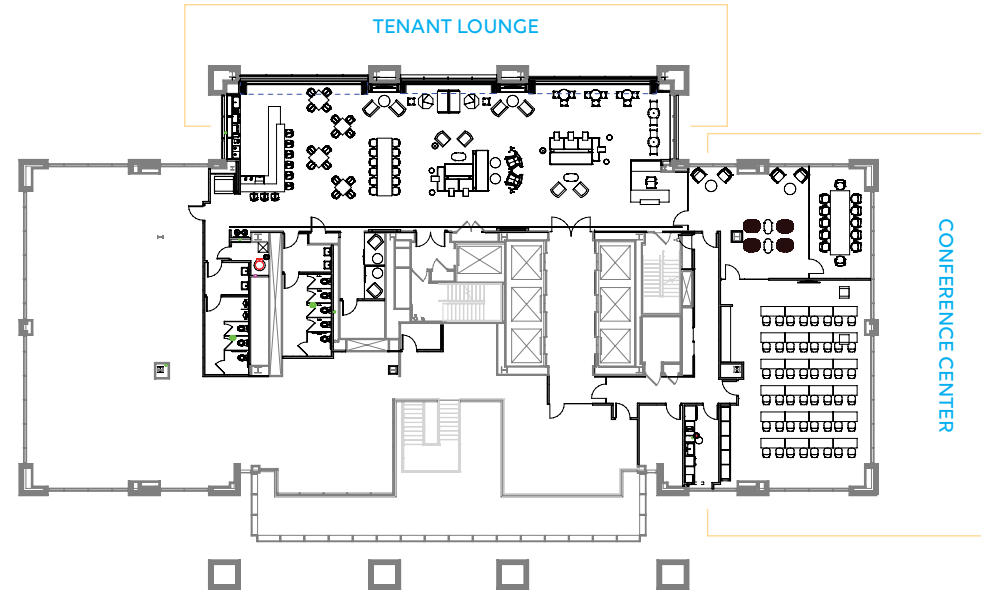
Theater setup



Classroom setup



Copyright JLL and Wright Heerema Architects



## NEW Tenant Lounge

Relax and enjoy the view with our "open air" window line offering top floor City views! Take a break from work or meet a colleague

and grab a coffee at our barista counter. This exceptional space is also available for private events through Corporate Concierge.



## PLUS:

Concierge services &  
Exciting **NEW** retail  
coming soon!



Mike Curran +1 312 228 2079 [Mike.Curran@jll.com](mailto:Mike.Curran@jll.com)

Joe Gordon + 1 312 228 2076 [Joseph.Gordon@jll.com](mailto:Joseph.Gordon@jll.com)

Belle Spinell + 1 312 245 4812 [isabella.spinell@jll.com](mailto:isabella.spinell@jll.com)